

B1535 Wide Beam, 1000 lm, 1300 lm
B3537 Wide Beam, 2000 lm

Downlight, 4 1/2" Square Parabolic Trim
Xicato Remote Phosphor
Fixed Function, MultiSource™ Technology

Optics and Applications

The parabolic curve of the square aperture is designed to produce a soft even pattern of light across the floor plane. The sealed corners and LED positioning allow the high efficiency fixture to provide deep shielding and low brightness. Suitable for low to high ceiling applications. Beam angle 75°.

Design Features - MultiSource™ Capable

Fixture housings are designed with MultiSource™ plug and play connectors allowing field conversion to PAR LED and MH MR-16 GX10 bases. New lighting technologies will be incorporated as they become available assuring continuity. The fixture incorporates an aperture assembly which slides 1/4" in any direction and pivots 7° while maintaining optimum photometric performance. Proprietary passive heat sinks ensure proper temperatures are maintained. Service from below only. Maximum ceiling thickness is 1 1/2".

Modules

Xicato remote phosphor modules use high efficiency blue LEDs that convert to white light when directed through a phosphor lens. Standard lumen packages are 1000 lm module operating on 700mA driver, 1300 lm module operating on 1A driver, or 2000 lm module operating on 1A driver. 3000K, 80 CRI is standard. 2700K, 3500K, 4000K available. Rated Life is 50,000 hours at 70% lumen output.

Dimming Driver

Dimming is standard 0-10V/10%. See accessories for additional dimming options. Specify voltage.

Finish

Standard trim is anodized Softglow® clear. SoftSheen™ is a new finish that lowers apparent brightness due to remote phosphor sources. Colors available, see accessories. Steel parts are phosphate conditioned then painted matte black to suppress light leaks.

Warranty

5 year limited. See KV website for manufacturers details.

General

Fixture is pre-wired and thermally protected, UL and C-UL listed, for damp location and eight wire, 75°C, branch circuit wiring. All products are union made IBEW. Designed and manufactured in the USA. B3537 requires marked spacing for fixture centers to be 24" from adjacent luminaire and 12" from nearest wall and allow 3" clearance above unit in the plenum.

Accessories

- SB Softglow black.
- SG Softglow gold.
- SH Softglow mocha.
- SP Softglow graphite.
- WT White trim flange.
- R2 26" support rails.
- R5 52" support rails.
- F Fuse.
- FMH4 Flush mount, drywall.
- ST Softglow titanium.
- SW Softglow wheat.
- SY Softglow pewter.
- SZ Softglow bronze.
- WHT White complete cone.
- 27 2700 Kelvin temp.
- 35 3500 Kelvin temp.
- 40 4000 Kelvin temp.

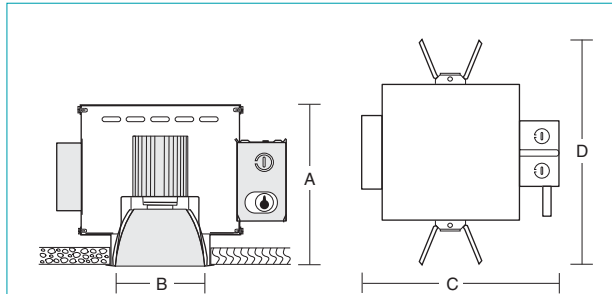
- D1 For wood and other materials contact factory.
- D1 Lutron to 1%, 3 wire control.*
- DE Lutron EcoSystem to 1%, digital 4 wire*
- 70 700mA Driver for 1300 lm module.*

*Specify voltage.

REM Remote Bodine EM. Includes battery pack, charger light, test switch and single lamp operation for 90 minutes. Ceiling access required.

SS SoftSheen™ add SS, e.g. SSW, SoftSheen™ Wheat.
 AS Xicato Artist Series 95 CRI modules, 2000 lm N/A.
 Contact factory for energy information.

Dimensions and Sources



Number	A Depth	B Aperture	C Width*	D Length	LED Module
B1535	8 3/8" 213mm	4 1/2" 114mm	12 1/8" 308mm	13 3/4" 349mm	1000 lm or 1300 lm Xicato
B3537	9 15/16" 252mm	4 1/2" 114mm	15 7/8" 403mm	16 3/8" 416mm	2000 lm Xicato

*For Lutron dimming use 13 1/8" and 16 7/8".

Energy and Ordering Information

Fixture	Module		System Lumens	System Watts	lm/W	Order Code				
	Lumens	Amps				Model	L	K	V	A
B1535	1000	700mA	785 [†]	24	32.8	B1535	10	30	27	70
	1300	700mA	711 [†]	18	38.7	B1535	13	30	27	70
	1300	1A	1042 [†]	27	38.1	B1535	13	30	27	1A
B3537	2000	1A	1583 [†]	48	33	B3537	20	30	27	1A

Fixture provided standard as 3000K operating on 277V, Softglow® trim. Module lumens: 10 for 1000 lm, 13 for 1300 lm, 20 for 2000 lm. For other Kelvin color temperatures: change 30 to 27 for 2700K, 35 for 3500K, 40 for 4000K. For 120 volt change 27 to 12. Add D1 for Lutron to 1%, add DE for Lutron Eco to 1%. Finish: add SS for SoftSheen™. See accessories for colors. e.g.: B1535-13302770SSD1 for B1535 1300 lm 3000K 277V 700mA with SoftSheen™ trim, Lutron dimming to 1%.
[†]Indicates LM-79 Test Data.

B1 B1535 B3537

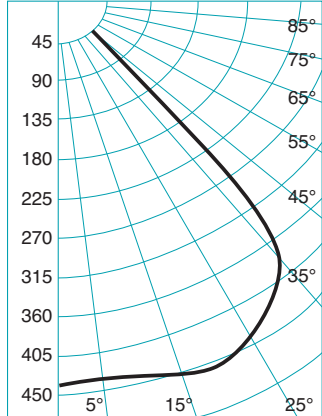
Performance Datachart

Single Unit Initial Footcandles, 30" Work Plane						Ceiling to Floor	Multiple Units Initial Footcandles, 30" Work Plane			
B1535* Xicato 1300 lm 3000K 700mA Read Top B1535 Xicato 1300 lm 3000K 1Amp Read Bottom							Ceiling 80%	Walls 50%	Floor 20%	
Nadir	20°		30°		40°		Spacing is Maximum Over Work Plane			
FC	FC	Diam	FC	Diam	FC	Diam	Spacing	RCR 1	RCR 3	RCR 8
14	12	4'	9	6'	3	9'	7'	15	13	9
21	18	4'	13	6'	4	9'	7'	22	19	13
10	9	5'	6	8'	2	11'	8'	11	9	6
15	13	5'	9	8'	3	11'	8'	16	13	9
8	7	5'	5	9'	1	13'	10'	8	7	5
11	10	5'	7	9'	2	13'	10'	12	10	7
6	5	6'	4	10'	1	14'	11'	6	5	4
9	8	6'	5	10'	2	14'	11'	9	8	5
5	4	7'	3	11'	1	16'	12'	5	4	3
7	6	7'	4	11'	1	16'	12'	7	6	4

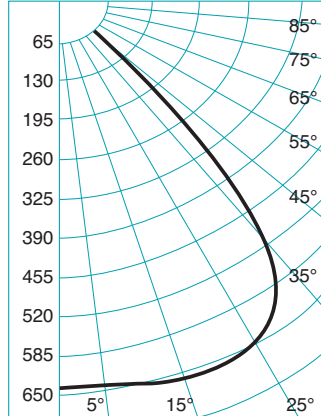
*For 1000 lm 3000K module 700mA multiply by 1.1.

Single Unit Initial Footcandles, 30" Work Plane						Ceiling to Floor	Multiple Units Initial Footcandles, 30" Work Plane			
B3537 Xicato 2000 lm 3000K 1Amp							Ceiling 80%	Walls 50%	Floor 20%	
Nadir	20°		30°		40°		Spacing is Maximum Over Work Plane			
FC	FC	Diam	FC	Diam	FC	Diam	Spacing	RCR 1	RCR 3	RCR 8
31	32	4'	21	6'	5	9'	7'	34	29	20
22	23	5'	15	8'	4	11'	8'	25	21	14
17	17	5'	11	9'	3	13'	10'	18	16	11
13	13	6'	9	10'	2	14'	11'	14	12	8
10	11	7'	7	11'	2	16'	12'	11	10	7

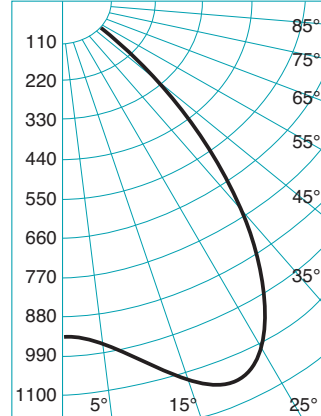
Candlepower Distribution



B1535 Xicato 1300 lm 3000K 700mA
Luminous efficacy 38.8 S/M 1.30



B1535 Xicato 1300 lm 3000K 1Amp
Luminous efficacy 37.9 S/M 1.30



B3537 Xicato 2000 lm 3000K 1Amp
Luminous efficacy 33.0 S/M 1.29

Candelas

	18W	27W	48W
o	699*	1022*	1583*
0	437	639	938
5	439	642	955
10	445	650	1020
15	451	658	1119
20	452	661	1150
25	443	649	1113
30	416	610	1002
35	348	509	762
40	185	270	360
45	85	123	168
50	43	63	50
55	31	45	34
60	22	32	23
65	15	22	15
70	10	15	9
75	6	9	5
80	3	5	1
85	0	0	0
90	0	0	0

o Vertical Angles
* Luminaire Lumens

Notes

- 1 Photometric Reports: B1535 (1300 lm/700mA) LTL Report No. 25353, B1535 (1300 lm/1A) LTL Report No. 25355, B3537 LTL Report No. 26931.
- 2 Data on all charts calculated with a clear Softglow® trim finish.
- 3 Softglow® colored trim multipliers, contact factory.
- 4 SoftSheen™ trim multipliers, contact factory.
- 5 Datachart degree headings measured one side from nadir. Diameter data includes both sides. Therefore the 15° column value describes a 30° pattern diameter at the work plane 30" above the floor. Footcandle values are at the diameter edge.
- 6 Datachart spacing is rounded off to the nearest foot.
- 7 The luminous efficacy (lm/W) refers to the total measured luminous flux (lumens) of the fixture divided by the total measured electrical input power (watts) of the complete fixture.